

A WALK THROUGH TIME



JUNCTION CITY HISTORICAL WALKING TOUR

Credits

Teaching American History Grant: Lane Education Service District

Mary Jo Huisman, Linda Lund, and Michelle Marshall

Junction City Historical Society:

Kitty and Carl Goodin, Linda VanOrden, Jamie Hooper

www.junctioncity.com/history



“How Are You Feeling Today?”

Site #1

Dr. N. L. Lee House

655 Holly

1872

Home to Junction City’s first physician, the one story back portion was built prior to 1872 and pulled by horses from Lancaster. Dr. Lee used the parlor as his office.



“Gathering Together”

Site #2

Cumberland Presbyterian Church

NE corner of 7th & Holly

1871

The first church to be built in Junction City was also used as school. Later, a bell tower was removed and the second story added, converting it to a hotel.

Point of Interest (POI): Iron Curb Guard, Buggy Bumper – NE corner of 6th & Holly



“Finnish Fanfare”

Site #3

Finnish Train

5th & Holly in Founders’ Park

1904

This locomotive was built in Finland and used during WWI. In 1980, it was transported from Portland, Oregon, to Junction City, after negotiations with the Finnish Consul.



“All Aboard”

Site #4

The Oregon Electric Depot

SW corner of 5th & Holly

1911 -1912

The first Oregon Electric train rolled into Junction City on October 15, 1912. With 20 passenger stops per day, this train was reported to be on time 99 out of 100 times.

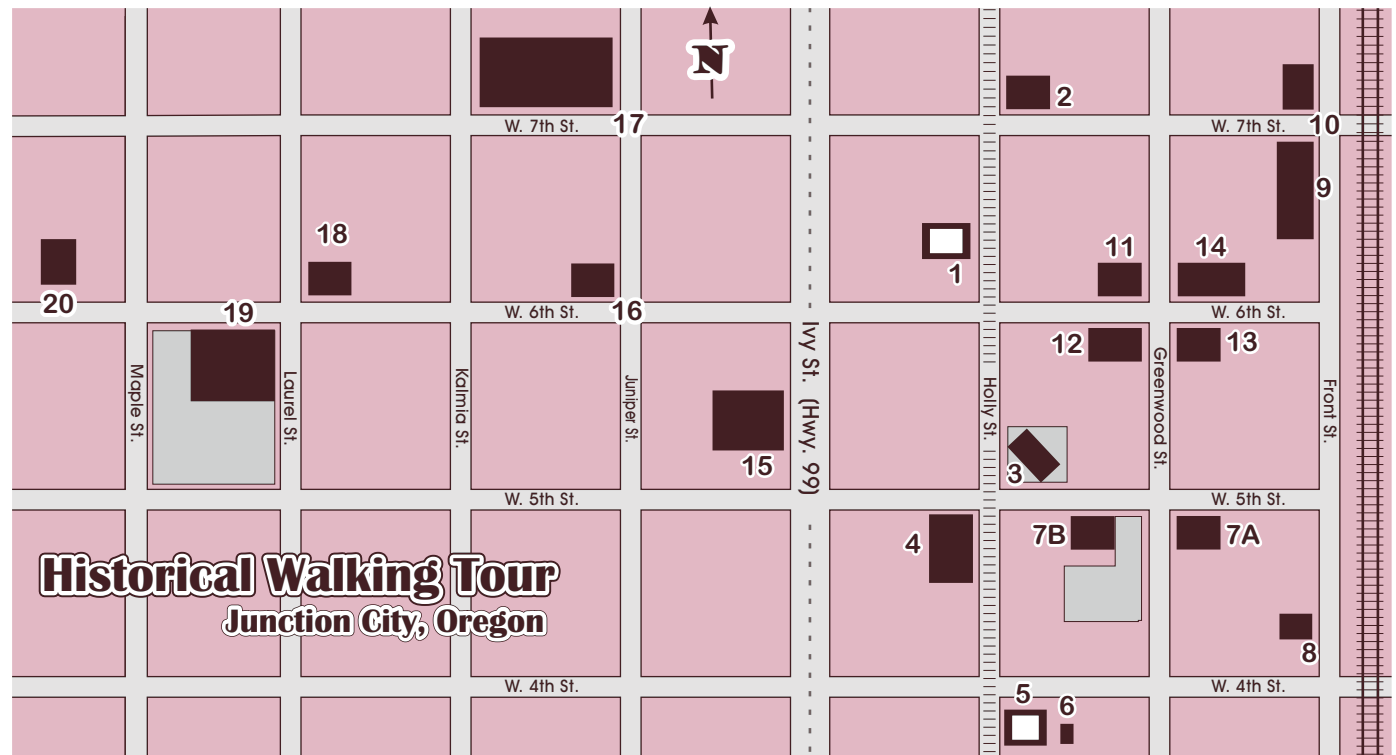


“Back in Time”

Site #5

The Pitney House
289 W 4th
1874

The Pitneys bought the house three years after they were married. Mary Pitney was born in this house and lived here most of her life. She left it to the local historical society upon her death in 1995.



Historical Walking Tour Junction City, Oregon



“Go Directly to Jail”

Site #6

Junction City Jail
289 W 4th on alley
1873

Built for the sum of \$84.37, Junction City’s first jail was originally at the back of city hall. Later it was moved to a local farm and used as a pump house. In 1998, it was donated to the Junction City Historical Society, by the Nill family.

“Stop by to see the Local Blacksmith”



Site #7A
Fish’s Livery Stable
SE corner of
5th & Greenwood
circa 1913

This stable had good rigs, good teams and responsible drivers for the Junction-Monroe stage route.

Site #7B
Blacksmith Shop
SW corner of
5th & Greenwood
circa 1911



First known as Peterson’s Blacksmithing & Implement House, it later became Pete Skovbo’s Blacksmith Shop.

“Need a Place to Stay?”

Site #8
Former “Ducky”
Lee Hotel
467 Front -1890



Built as a drugstore, it became a hotel after Mr. Lee’s death. In 1913, it was reported that Mrs. Azula M. “Ducky” Lee provided good meals and splendid accommodations.

*POI - Buggy Bumpers
SE corner of 6th &
Front

*POI - Hitching Rings
NW corner of 6th
& Front (in front of
building)



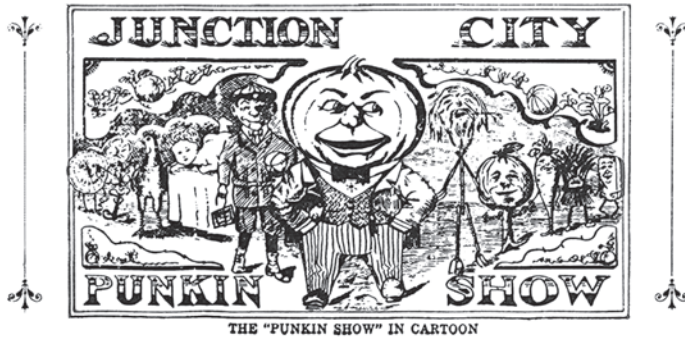
“An Evening Out”

Site #9

Junction City Opera House
Front Street between 6th & 7th

1890

Reported to be the finest opera house between Seattle and San Francisco, opera and ballroom were on the upper story. Shops and hotel rooms were on the ground floor. This building burned in 1915.



“From Pumpkins to Water Tower”

Site #10

“Punkin” Show Building
NW corner of 7th & Front
1905

This was the site of the skating rink and later the site of the annual “Punkin” Show, an exhibition fair for farm produce, flowers, etc. The cartoon was created for the show’s first year, 1910. After this building burned, the water tower and pump house were built in 1938.



“A Place of Service”

Site #11

City Hall / Fire Department
NW corner of Greenwood & 6th
1878

The first city hall of Junction City was built for \$350. The volunteer fire department was housed on the bottom floor and city offices were above.



“Need Something for the Farm?”

Site #12

Mason Building
SW corner of Greenwood & 6th
1909

D.F. Mason & Son had this building constructed for their business of selling hardware, furniture, stoves, farm implements, wagons, etc. Flats and office rooms were on the second floor. Later, it was used as a department store.



“Standing Strong”

Site #13

Oddfellows Building
SE corner of 6th & Greenwood
1909

This lodge cost \$10,000 to build. It had a reception room, large banquet hall and kitchen; very accommodating.



“1890s City Center”

Site #14

Lee's Drug, Farmers & Merchants Bank,
Hardware Store, General Merchandise Store
190, 180, 170, 160 W 6th
(from West to East)

In 1890, Dr. Lee built the drug store for his son to operate. W.G. Pickett built the other three buildings in 1892.



“Let’s Go to the Show”

Site #15

The Valley Theater
Ivy Street between 5th & 6th
Early 1940’s

This theater was built soon after Highway 99 opened. It was remodeled in art-deco style, inside and out, around 1995.



“Reading, Writing, and Arithmetic”

Site #17

Junction City Elementary School
NW corner of 7th & Juniper
1892

The school was built on this site, and torn down in 1929. A new grade school was built on the same location, and later sold in 1976 when Oaklea Middle School opened.



Lane County Historical Society and Museum

“Higher Learning”

Site #19

Washburne School
6th between Laurel & Maple
1908

Washburne Park is the site of this former school, built on land donated by the Washburne family. Grades 6 – 8 were on the lower floor, while the high school had the second floor. In 1936, a new brick high school was built one block to the SW on Maple Street.



“A House of History”

Site #16

Moorhead House
617 Juniper
1878

This house was once owned by S.L. Moorhead, founder and publisher of the *Junction City Times* in the late 1800s. He was also an active politician.

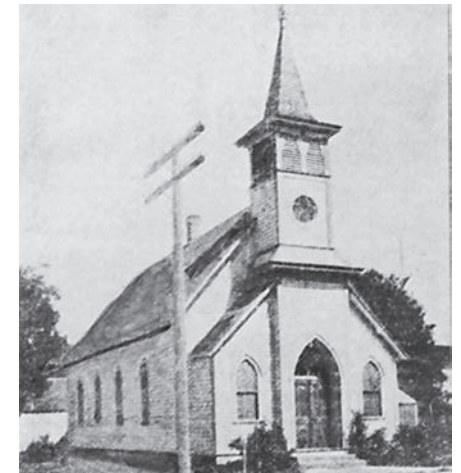


“Let’s Make a Deal”

Site #18

G.M. Jackson House
670 W 6th
1910

This was home to G.M. Jackson, a prominent businessman. In 1889, he started a general merchandise business with his son, and also ran a real estate firm.



“A Danish Place of Gathering”

Site #20

Danish Lutheran Church
926 W 6th
1908

This official church of the Danish colony was built on the corner of 7th and Ivy. It was moved to this site on W 6th in 1940, when Highway 99 separated the church from its hall.